

# **Oracle® Banking Platform Collections**

Infrastructure Setup Guide

Release 2.4.0.0.0

**E64764-01**

September 2015

Copyright © 2011, 2015, Oracle and/or its affiliates. All rights reserved.

This software and related documentation are provided under a license agreement containing restrictions on use and disclosure and are protected by intellectual property laws. Except as expressly permitted in your license agreement or allowed by law, you may not use, copy, reproduce, translate, broadcast, modify, license, transmit, distribute, exhibit, perform, publish or display any part, in any form, or by any means. Reverse engineering, disassembly, or decompilation of this software, unless required by law for interoperability, is prohibited.

The information contained herein is subject to change without notice and is not warranted to be error-free. If you find any errors, please report them to us in writing.

U.S. GOVERNMENT END USERS: Oracle programs, including any operating system, integrated software, any programs installed on the hardware, and/or documentation, delivered to U.S. Government end users are "commercial computer software" pursuant to the applicable Federal Acquisition Regulation and agency-specific supplemental regulations. As such, use, duplication, disclosure, modification, and adaptation of the programs, including any operating system, integrated software, any programs installed on the hardware, and/or documentation, shall be subject to license terms and license restrictions applicable to the programs. No other rights are granted to the U.S. Government.

This software or hardware is developed for general use in a variety of information management applications. It is not developed or intended for use in any inherently dangerous applications, including applications that may create a risk of personal injury. If you use this software or hardware in dangerous applications, then you shall be responsible to take all appropriate failsafe, backup, redundancy, and other measures to ensure its safe use. Oracle Corporation and its affiliates disclaim any liability for any damages caused by use of this software or hardware in dangerous applications.

Oracle and Java are registered trademarks of Oracle and/or its affiliates. Other names may be trademarks of their respective owners.

This software or hardware and documentation may provide access to or information on content, products and services from third parties. Oracle Corporation and its affiliates are not responsible for and expressly disclaim all warranties of any kind with respect to third-party content, products, and services. Oracle Corporation and its affiliates will not be responsible for any loss, costs, or damages incurred due to your access to or use of third-party content, products, or services.

---

---

# Contents

<b>Preface</b> .....	vii
Audience .....	vii
Documentation Accessibility .....	vii
Organization of the Guide .....	vii
Conventions .....	viii
<b>1 Introduction</b>	
<b>2 PTP Approval Changes</b>	
2.1 PTP Changes in APM .....	2-3
2.1.1 Adding the Attributes Required for PTP OES Validation .....	2-3
2.1.2 Editing Conditions on Attribute .....	2-7
2.1.3 Adding Policies to Resources .....	2-9
2.1.4 Giving Grant .....	2-18
<b>3 OBIEE Reports Setup</b>	
3.1 Installing Repository Creation Utility (RCU) .....	3-1
3.2 Installing Oracle Business Intelligence 11g .....	3-8
3.3 Copying RPD and Reports .....	3-24
3.3.1 Reports Setup .....	3-24
3.3.2 Day 0 Setup .....	3-24
3.3.3 RPD Deployment .....	3-25



## List of Figures

2-1	PTP Approvals in Artifact Dependency Map (SM500) .....	2-3
2-2	APM (OES) Login .....	2-4
2-3	Attribute - PromiseToPay_DaysPastDue .....	2-5
2-4	Attribute - PromiseToPay_DaysPastDue New .....	2-6
2-5	Entering Values .....	2-6
2-6	Authorization Management - Creating a New Resource .....	2-8
2-7	Authorization Management - New Resource Page .....	2-9
2-8	Authorization Management - Selecting Resource Type .....	2-9
2-9	Service Searched Screen .....	2-10
2-10	Searching a Service .....	2-10
2-11	Search Resources - Find Policies .....	2-11
2-12	Search Authorization Policies .....	2-11
2-13	Search Principal .....	2-12
2-14	Search Principal - Application Roles .....	2-13
2-15	Search Principal .....	2-14
2-16	Search Targets .....	2-15
2-17	Add Targets .....	2-16
2-18	Target Appears .....	2-17
2-19	Targets - performwithoutApprovals .....	2-17
2-20	Condition Builder .....	2-18
3-1	Run rcu.bat file .....	3-2
3-2	RCU Installation Wizard - Welcome page .....	3-2
3-3	Create Repository .....	3-3
3-4	Database Connection Details .....	3-4
3-5	Warning message .....	3-4
3-6	Checking Global Prerequisites .....	3-4
3-7	Select Components .....	3-5
3-8	Checking Component Prerequisites .....	3-5
3-9	Schema Passwords .....	3-6
3-10	Map Tablespace .....	3-6
3-11	Confirmation message .....	3-7
3-12	Validating and Creating Tablespaces .....	3-7
3-13	Summary .....	3-7
3-14	Completion .....	3-8
3-15	Oracle Universal Installer .....	3-9
3-16	OBI Installation Wizard - Welcome page .....	3-9
3-17	Install Software Updates .....	3-10
3-18	Select Installation Type .....	3-11
3-19	Prerequisite Checks .....	3-12
3-20	Create or Scale Out BI System .....	3-13
3-21	Specify Installation Location .....	3-14
3-22	Warning message .....	3-14
3-23	Configure Components .....	3-15
3-24	BIPLATFORM Schema .....	3-16
3-25	MDS Schema .....	3-17
3-26	Configure Ports .....	3-18
3-27	Specify Security Updates .....	3-19
3-28	Warning message .....	3-19
3-29	Installation Progress .....	3-20
3-30	Installation Successful .....	3-21
3-31	Complete BI Installation .....	3-22
3-32	OBI Interface .....	3-23
3-33	Update source name and user credentials .....	3-25
3-34	Upload repository to OBI server .....	3-26

## List of Tables

2-1	Product-Shipped Adapter Parameters.....	2-1
2-2	Verifying BPM Worklist Parameters.....	2-2
2-3	PTP Manual and Auto-Approve Parameters.....	2-7
2-4	Creating New Resources.....	2-9
2-5	Application Roles.....	2-10
2-6	Searching Policies - Search Authorization .....	2-11
2-7	Searching Policies - Giving Grant.....	2-18

---

---

# Preface

This document helps you to configure the Collections infrastructure setup.

This preface contains the following topics:

- [Audience](#)
- [Documentation Accessibility](#)
- [Organization of the Guide](#)
- [Conventions](#)

## Audience

This document is intended for the following:

- Consulting Staff
- Administrators

## Documentation Accessibility

For information about Oracle's commitment to accessibility, visit the Oracle Accessibility Program website at <http://www.oracle.com/pls/topic/lookup?ctx=acc&id=docacc>.

### Access to Oracle Support

Oracle customers have access to electronic support through My Oracle Support. For information, visit <http://www.oracle.com/pls/topic/lookup?ctx=acc&id=info> or visit <http://www.oracle.com/pls/topic/lookup?ctx=acc&id=trs> if you are hearing impaired.

## Organization of the Guide

This document contains:

### Chapter 1, "Introduction"

This chapter presents an overview of the infrastructure setup required for Collections.

### Chapter 2, "PTP Approval Changes"

This chapter describes the PTP approval changes, prerequisite, and verification for infrastructure setup.

### Chapter 3, "OBIEE Reports Setup"

This chapter explains the procedure of installing RCU and OBI 11g for OBIEE reports setup.

## Conventions

The following text conventions are used in this document:

<b>Convention</b>	<b>Meaning</b>
<b>boldface</b>	Boldface type indicates graphical user interface elements associated with an action, or terms defined in text or the glossary.
<i>italic</i>	Italic type indicates book titles, emphasis, or placeholder variables for which you supply particular values.
monospace	Monospace type indicates commands within a paragraph, URLs, code in examples, text that appears on the screen, or text that you enter.



---

---

## Introduction

This document explains the configuration required in enterprise services, such as DMS, OIM, APS to enable Collections module deployment along with OBP platform. You must perform the configuration outlined in this document once Collections module is deployed along with OBP version 2.4.0.0.0. Collections module uses Document Management System (DMS), Oracle Identity Manager (OIM), APS API for document generation and delivery, user profile management, and application security. Various functional components in Collections use the enterprise services offered by OBP.



## PTP Approval Changes

Collectors take promise to pay from customers for the outstanding amount. A Promise to Pay (PTP) transaction may require supervisor approval based on various parameters. The parameters on which PTP approval decision has to be made are covered in subsequent sections along with the details of configuration required to setup the approval process. The PTP approval process has been implemented with Oracle Authorization Policy Manager.

### Prerequisite and Verification

Before you configure the Oracle Authorization Policy Manager (OAPM), ensure the following verifications are performed:

### Verifying Installed Application

You need to follow the below mentioned steps to verify installed application:

1. Collections module must be deployed along with OBP and is up and running.
2. SOA Domain must be configured along with OBP UI and Host Domain.
3. Oracle Authorization Policy Manager (OAPM) must be installed. OAPM is used to implement the resource hierarchies and multiple policy definitions. This is also termed as OES (Oracle Entitlements Server) or APM (Authorization Policy Manager) to verify product shipped configurations in the SOA Domain.

The UI, Host and SOA domains are secured.

4. Ensure that the following are present for PTP approval OES parameters. Following are product shipped parameters, which can be used for configuration:

**Table 2–1 Product-Shipped Adapter Parameters**

<Host_>Home>/config/properties/ConstraintAttributeHelper.properties Product Shipped Parameters	Adapters
PromiseToPay.PTPType	com.ofss.fc.app.adapter.impl.collection.PromiseToPayWorkflowAdapter
PromiseToPay.ProductGroup	com.ofss.fc.app.adapter.impl.collection.PromiseToPayWorkflowAdapter
PromiseToPay.DaysPastDue	com.ofss.fc.app.adapter.impl.collection.PromiseToPayWorkflowAdapter
PromiseToPay.CoverageRatio	com.ofss.fc.app.adapter.impl.collection.PromiseToPayWorkflowAdapter
PromiseToPay.ScrificeAmount	com.ofss.fc.app.adapter.impl.collection.PromiseToPayWorkflowAdapter

**Table 2–1 (Cont.) Product-Shipped Adapter Parameters**

<Host_Home>/config/properties/ConstraintAttributeHelper.properties Product Shipped Parameters	Adapters
PromiseToPay.DaysToFirstInstallment	com.ofss.fc.app.adapter.impl.collection.PromiseToPayWorkflowAdapter
PromiseToPay.NumberOfInstallments	com.ofss.fc.app.adapter.impl.collection.PromiseToPayWorkflowAdapter
PromiseToPay.TotalPromiseDurationInDays	com.ofss.fc.app.adapter.impl.collection.PromiseToPayWorkflowAdapter
PromiseToPay.UserRole	com.ofss.fc.app.adapter.impl.collection.PromiseToPayWorkflowAdapter

- To verify whether PTP is configured for approval in the BPM worklist, use the following piece of SQL statement. The SQL query has to be run on the OBP Host database.

```
SELECT * from Flx_Sm_Authorizations_B where Cod_Service_Id =
'com.ofss.fc.appx.collection.service.promisetopay.PromiseToPayApplicationServiceSpi.create';
```

**Table 2–2 Verifying BPM Worklist Parameters**

Verify results based on the following table:Column	Values
COD_SERVICE_ID	com.ofss.fc.appx.collection.service.promisetopay.PromiseToPayApplicationServiceSpi.create
COD_AUTH_ID	1052
AUTH_DESC	MATRIX_AUTH (This is to execute the OES rules and check if approval is needed or the PTP can be auto approved)
IS_AUTH_REQUIRED	Y (meaning that the PTP should check the OES rules and go for approval if needed)
IS_DELEGATED	N
CREATED_BY	SETUP
CREATION_DATE	<some date and time value>
LAST_UPDATED_BY	SETUP
LAST_UPDATE_DATE	<some date and time value>
OBJECT_VERSION_NUMBER	1
OBJECT_STATUS	A

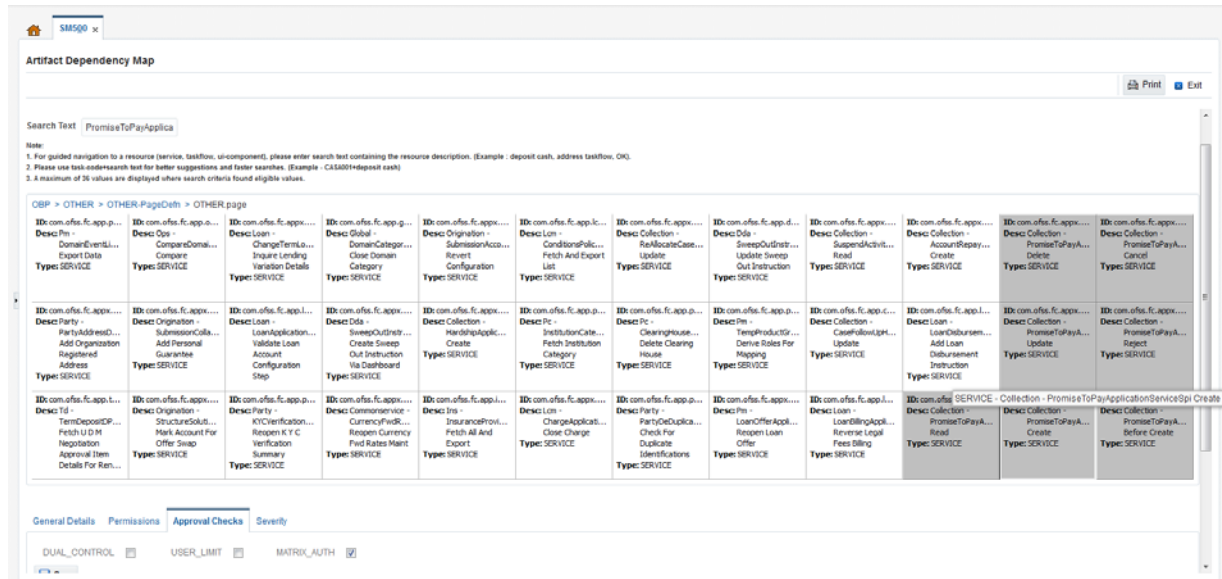
If the above row is not present, insert a new row with given values by using the following SQL statements.

```
Insert into FLX_SM_AUTHORIZATIONS_B (COD_SERVICE_ID,COD_AUTH_ID,AUTH_DESC, IS_AUTH_REQUIRED, IS_DELEGATED, CREATED_BY, CREATION_DATE, LAST_UPDATED_BY, LAST_UPDATE_DATE, OBJECT_VERSION_NUMBER, OBJECT_STATUS) values ('com.ofss.fc.app.collection.service.promisetopay.PromiseToPayApplicationServiceSpi.create','1052','MATRIX_AUTH','Y','N','SETUP',to_timestamp('31-MAY-10 02.33.04.000000000 PM','DD-MON-RR HH.MI.SS.FF
```

```
AM'), 'SETUP', to_timestamp('31-MAY-10 02.33.04.000000000 PM', 'DD-MON-RR
HH.MI.SS.FF AM'), 1, 'A');
```

If the value of the field IS\_AUTH\_REQUIRED is N, then it can be updated from SM500 screen that is, Artifact Dependency Map. The value has to be update in Approval Checks Tab from SM500 screen for this application service.

Figure 2–1 PTP Approvals in Artifact Dependency Map (SM500)



## 2.1 PTP Changes in APM

APM/OES is a system where you can define Oracle Entitlement Server (OES) rules. These rules help in deciding whether PTP approval should be a manual approval or auto-approved.

---

**Note:** These rules are part of Day Zero Setup. You can use this document to verify whether the rules have been configured or not. If the rules are not configured, then you use this document to configure them.

---

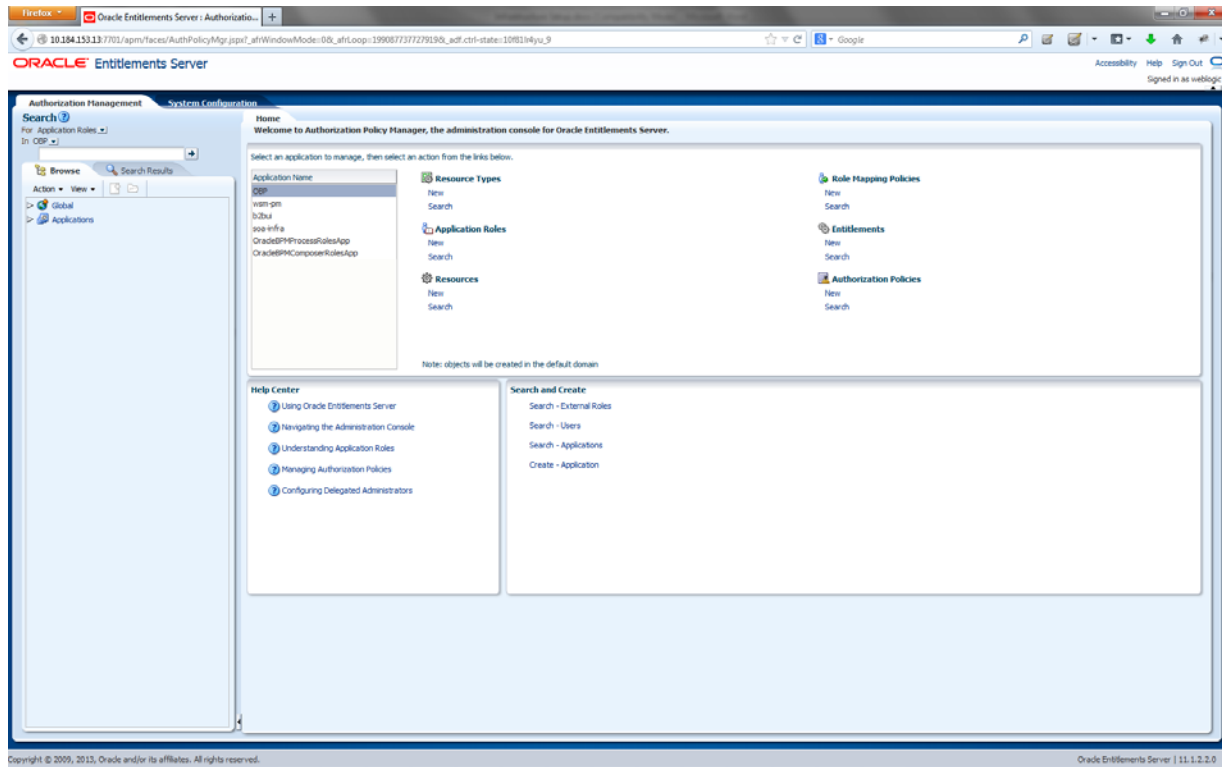
1. In APM, you should add the attributes, based on their values, it is decided whether PTP should be auto-approved or should go for manual approval.
2. The attributes added uses simple if else conditions and based on the final result (true/false), the decision to auto-approve or manual approve is made.

### 2.1.1 Adding the Attributes Required for PTP OES Validation

Follow the steps below to add the attributes required for PTP OES validation:

1. Log in to APM (OES) with administrative credentials.

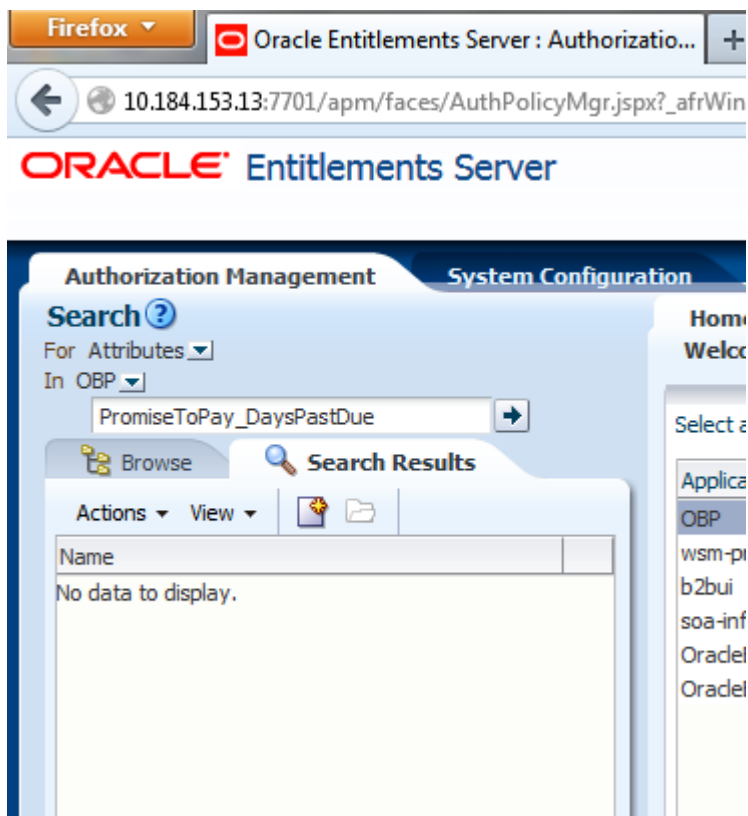
Figure 2–2 APM (OES) Login



2. In the **Authorization Management** tab, under **Search > For Attributes > In OID PolicyDomain > Search** for any attribute from the list provided below:

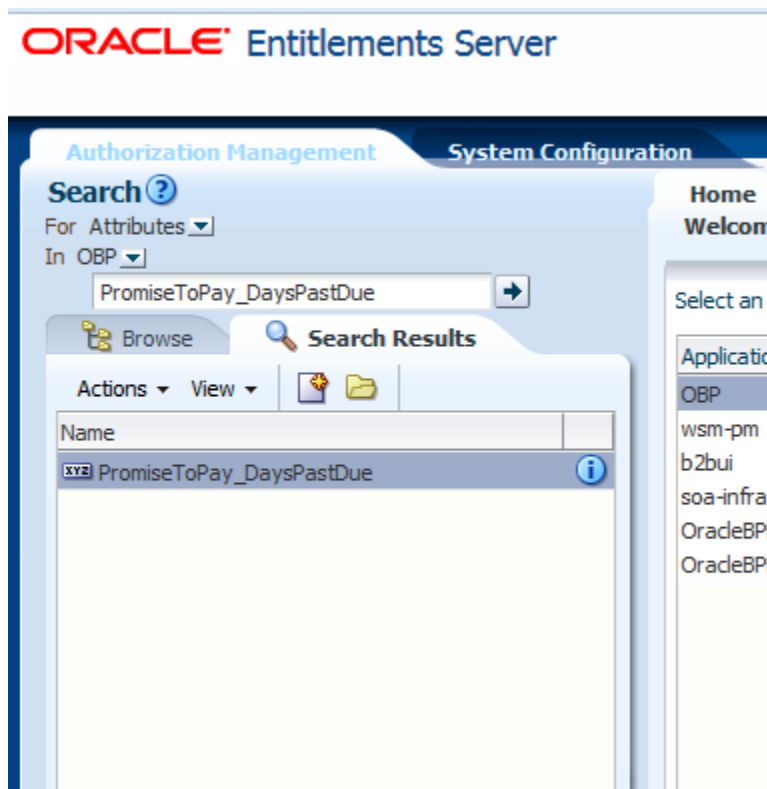
- PromiseToPay\_PTPTType
- PromiseToPay\_ProductGroup
- PromiseToPay\_DaysPastDue
- PromiseToPay\_CoverageRatio
- PromiseToPay\_ScrificeAmount
- PromiseToPay\_DaysToFirstInstallme
- PromiseToPay\_NumberOfInstallmen
- PromiseToPay\_TotalPromiseDurationInDays
- PromiseToPay\_UserRole

Below mentioned screen is the Attribute **PromiseToPay\_DaysPastDue** screen.

**Figure 2-3 Attribute - PromiseToPay\_DaysPastDue**

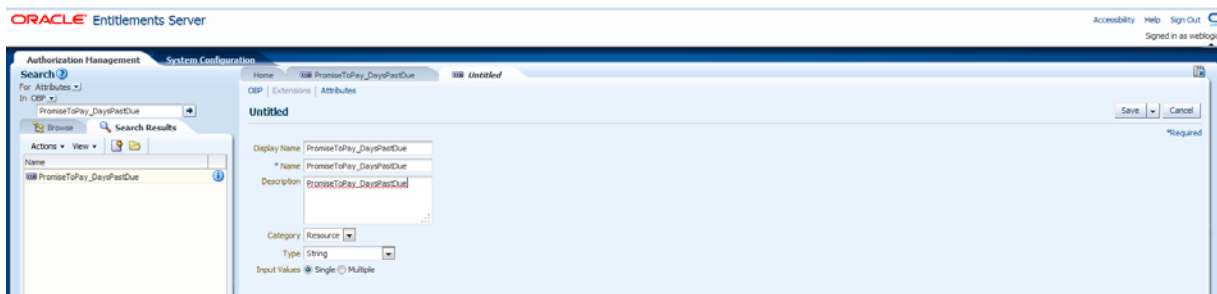
3. If the attribute **PromiseToPay\_DaysPastDue** does not exist, then create it by clicking the **New** icon.

Figure 2–4 Attribute - PromiseToPay\_DaysPastDue New



4. Enter **Display Name**, **Name**, and **Description**. The **Display Name**, **Name**, and **Description** will be same as the attribute name.

Figure 2–5 Entering Values



5. Select **Category** as **Dynamic**.
6. Select the **Type** and **Input Values** based on the field type and the kind of values.
7. Click **Save**.

The following table lists the PTP manual and auto-approve parameters.



**Table 2–3 PTP Manual and Auto-Approve Parameters**

Display Name	Name	Description	Category	Type	Input Values
PromiseToPay_PTPType	PromiseToPay_PTPType	Indicates the promise to pay type.	Dynamic	String	Single
PromiseToPay_ProductGroup	PromiseToPay_ProductGroup	Indicates the product group for which the PTP has been taken.	Dynamic	String	Single
PromiseToPay_DaysPastDue	PromiseToPay_DaysPastDue	Indicates the days past due.	Dynamic	String	Single
PromiseToPay_CoverageRatio	PromiseToPay_CoverageRatio	Indicates the coverage ratio.	Dynamic	Integer	Single
PromiseToPay_ScrificeAmount	PromiseToPay_ScrificeAmount	Indicates the sacrifice amount.	Dynamic	Integer	Single
PromiseToPay_DaysToFirstInstallment	PromiseToPay_DaysToFirstInstallment	Indicates the day after the first installment.	Dynamic	String	Single
PromiseToPay_NumberOfInstallments	PromiseToPay_NumberOfInstallments	Indicates the total number of installments in PTP.	Dynamic	String	Single
PromiseToPay_TotalPromiseDurationInDays	PromiseToPay_TotalPromiseDurationInDays	Indicates the total promise duration in days.	Dynamic	String	Single
PromiseToPay_UserRole	PromiseToPay_UserRole	Indicates the role of the user who has created the PTP.	Dynamic	String	Single

## 2.1.2 Editing Conditions on Attribute

The OES rules are checked based on the conditions defined in the rules. These rules are defined based on the functional requirement and business perspective. In this case, the OES rules are defined to decide whether PTP has to go for manual approval or has to be auto approved. If the outcome is true, auto approval is done, else PTP is sent for manual approval.

---



---

**Note:** The services will be product shipped and will be available after the day 0 setup. Please follow the steps below to define/verify the conditions on the attributes that are present in the table above.

---

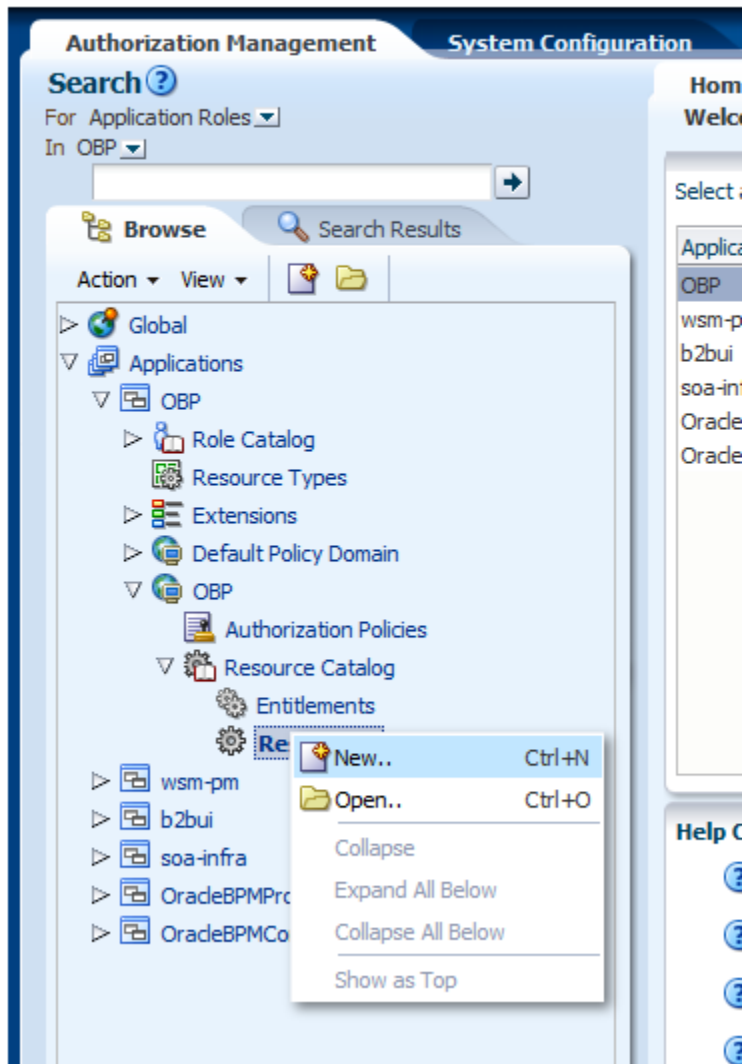


---

1. Click **Browse > Applications > [Policy Store Area] > [Policy Store Domain] > ResourceCatalog**. Select **Resources**, then right-click and select **Open** (to verify).
2. Right-click **Resources** and then select **New**.

Figure 2-6 Authorization Management - Creating a New Resource

## ORACLE Entitlements Server



When you click the **New** button, following screen appears.

**Figure 2–7 Authorization Management - New Resource Page**

3. In the **Untitled** screen, specify the following values:

**Table 2–4 Creating New Resources**

Field Name	Value
Resource Type	Service
Display Name	com.ofss.fc.appx.collection.service.promisetopay.PromiseToPayApplicationServiceSpi.create
Name	com.ofss.fc.appx.collection.service.promisetopay.PromiseToPayApplicationServiceSpi.create
Description	com.ofss.fc.appx.collection.service.promisetopay.PromiseToPayApplicationServiceSpi.create

4. Select the **Resource Type** as **Service**.

**Figure 2–8 Authorization Management - Selecting Resource Type**

5. Click **Save**.

## 2.1.3 Adding Policies to Resources

Policies are added to apply grant or deny permissions to the application roles to the application service configured.

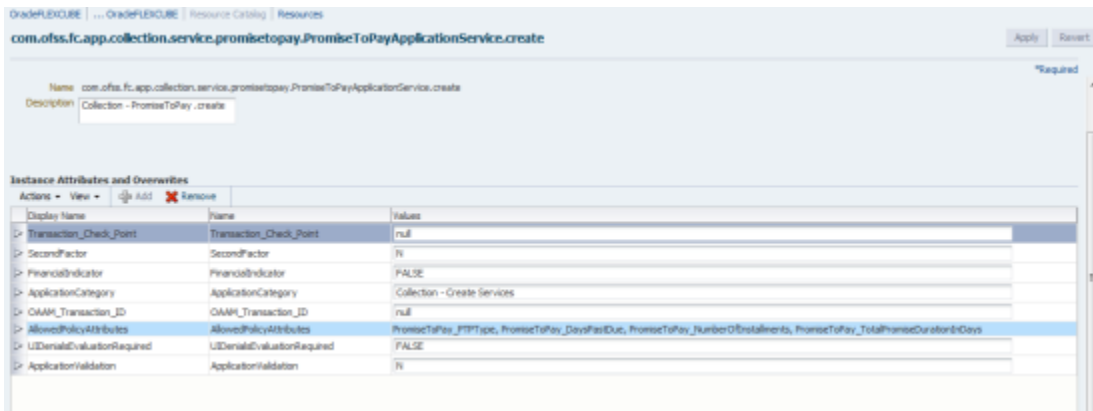
The following application roles are shipped along with the product and will be available in Oracle Internet Directory (OID) once the Day Zero setup is completed.

**Table 2–5 Application Roles**

Application Role Description	Corresponding Role in OID
Collector (Dialer)	ClnCollectorDialer
Collector (Early - Prompt mode)	ClnCollectorErPmtMd
Collector (Early - List mode)	ClnCollectorErLstMd
Collector (Recovery)	ClnCollectorRecov
Supervisor (Collection)	ClnSupervisorCln
Supervisor (Recovery)	ClnSupervisorRecov
Manager (Collection)	ClnManagerCln
Manager (Recovery)	ClnManagerRecov
Collection Admin	ClnCollectionAdmin

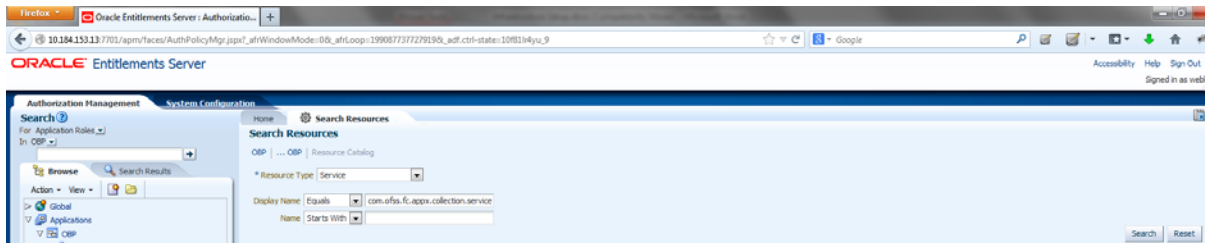
1. You can search the resource from APM domain and view the added attribute in the Service Searched screen.

**Figure 2–9 Service Searched Screen**



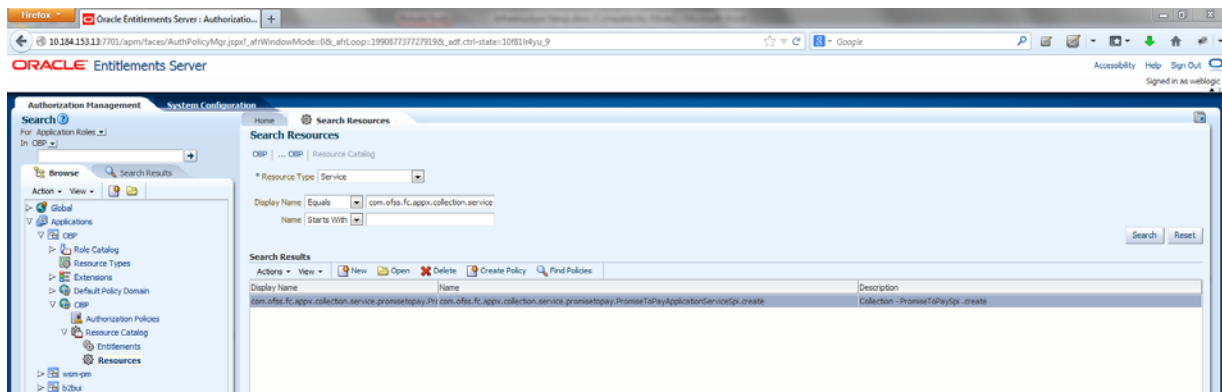
2. To search a service, select **Display Name** as **Equals** and **Value** as **com.ofss.fc.appx.collection.service.promisetopay.PromiseToPayApplicationServiceSpi.create**.

**Figure 2–10 Searching a Service**



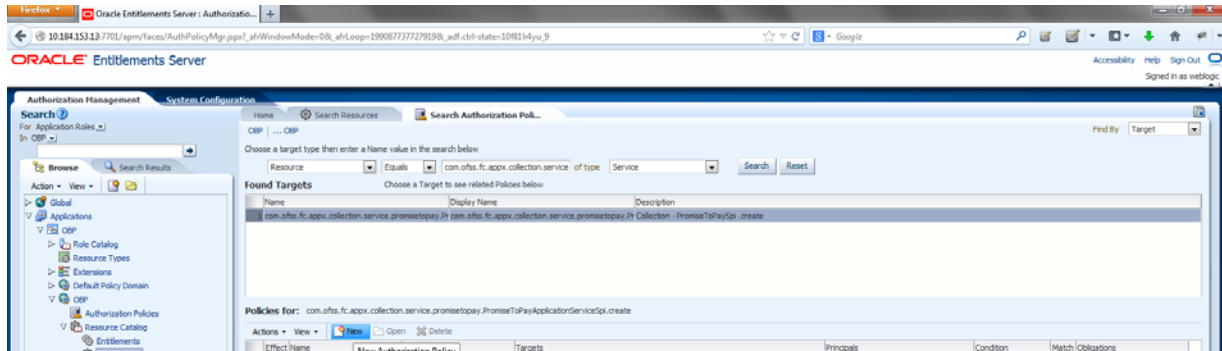
3. Click **Search**.
4. In the **Search Results** grid, click the returned value and then click **Find Policies**.

**Figure 2–11 Search Resources - Find Policies**



- In the **Search Results** section, click **New**. A new tab named **Untitled** opens alongside Search Authorization Policies tab.

**Figure 2–12 Search Authorization Policies**



- In the **Untitled** tab, specify the following values:

**Table 2–6 Searching Policies - Search Authorization**

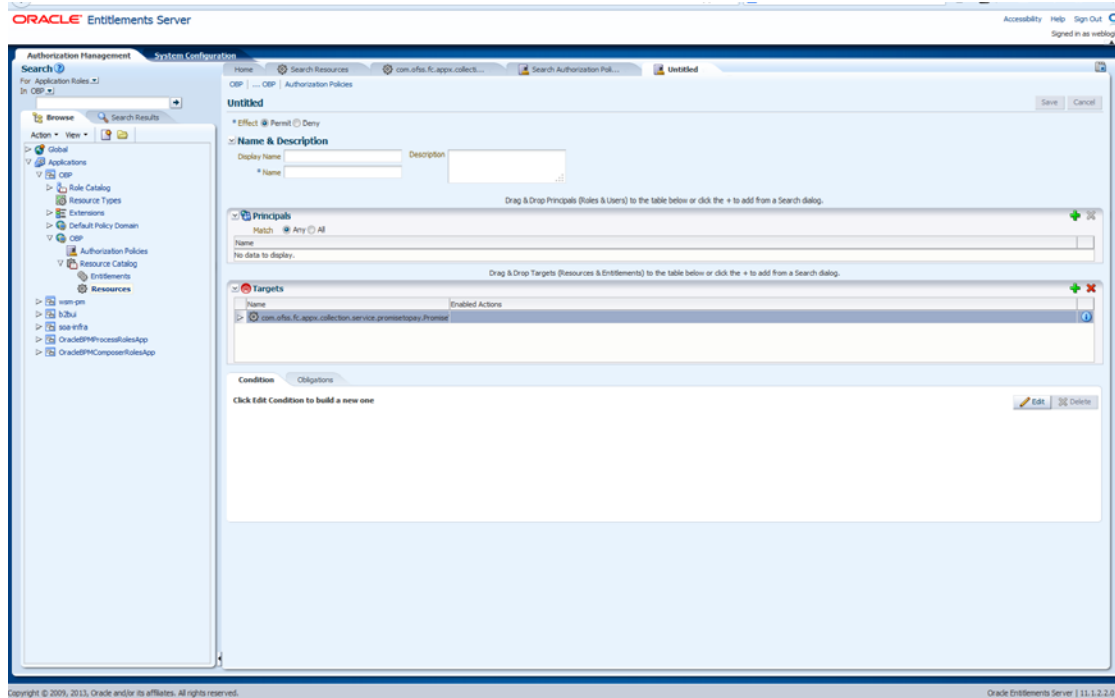
Field Name	Value
Effect	Permit
Display Name	<The_application_role_for_whom_grant_is_given_all_caps>_<application_name>_APPX_COLLECTION_SERVICE_PROMISETOPAY_PROMISETOPAYAPPLICATIONSERVICESPI_CREATE_PERFORMWITHOUTAPPROVALS_PL
Name	<The_application_role_for_whom_grant_is_given_all_caps>_<application_name>_APPX_COLLECTION_SERVICE_PROMISETOPAY_PROMISETOPAYAPPLICATIONSERVICESPI_CREATE_PERFORMWITHOUTAPPROVALS_PL
Description	<The_application_role_for_whom_grant_is_given_all_caps>_<application_name>_APPX_COLLECTION_SERVICE_PROMISETOPAY_PROMISETOPAYAPPLICATIONSERVICESPI_CREATE_PERFORMWITHOUTAPPROVALS_PL
Principals	Match - All

For example,

LNCOLLECTORDIALER\_OBP\_APPX\_COLLECTION\_SERVICE\_PROMISETOPAY\_PROMISETOPAYAPPLICATIONSERVICESPTI\_CREATE\_PERFORMWITHOUTAPPROVALS\_PL

- a. In the **Principals** section, click the **Add Principals** icon. The **Search Principal** window appears.

**Figure 2–13 Search Principal**



- b. In the **Search Principal** window, select **Application Roles** tab, and then search for the application role which is shipped with the product.

**Figure 2–14 Search Principal - Application Roles**

**Search Principal**

Search for Principals and add them to the Selected Items table below.

**Application Roles** External Roles Users

**Search** | Default Roles

Application OBP

Display Name Starts With

Name Starts With

Category

Search Reset

**Search Results**

View Add Selected Add All

Display Name	Role Name	Description	Category
No data to display.			

**Selected Principals**

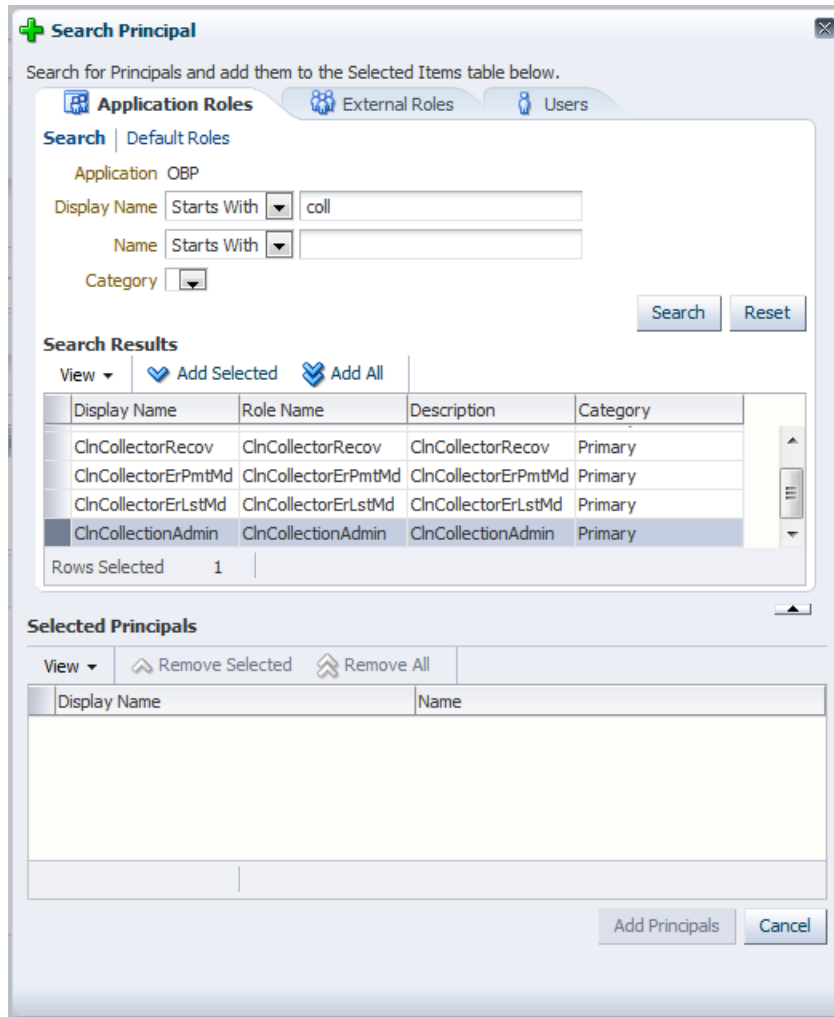
View Remove Selected Remove All

Display Name	Name
--------------	------

Add Principals Cancel

- c. In the result grid, select **Authenticated** role and then click **Add Principals**.

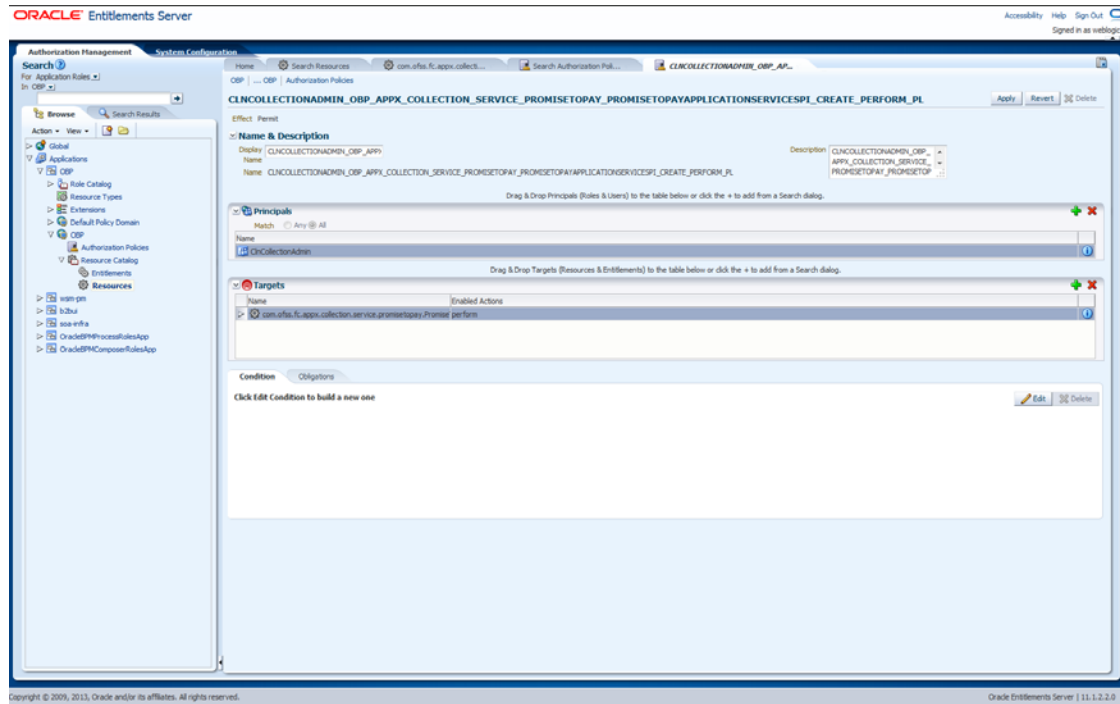
**Figure 2–15 Search Principal**



- d. In the **Targets** section, click the **Add Targets** icon.  
The **Search Target** window appears.

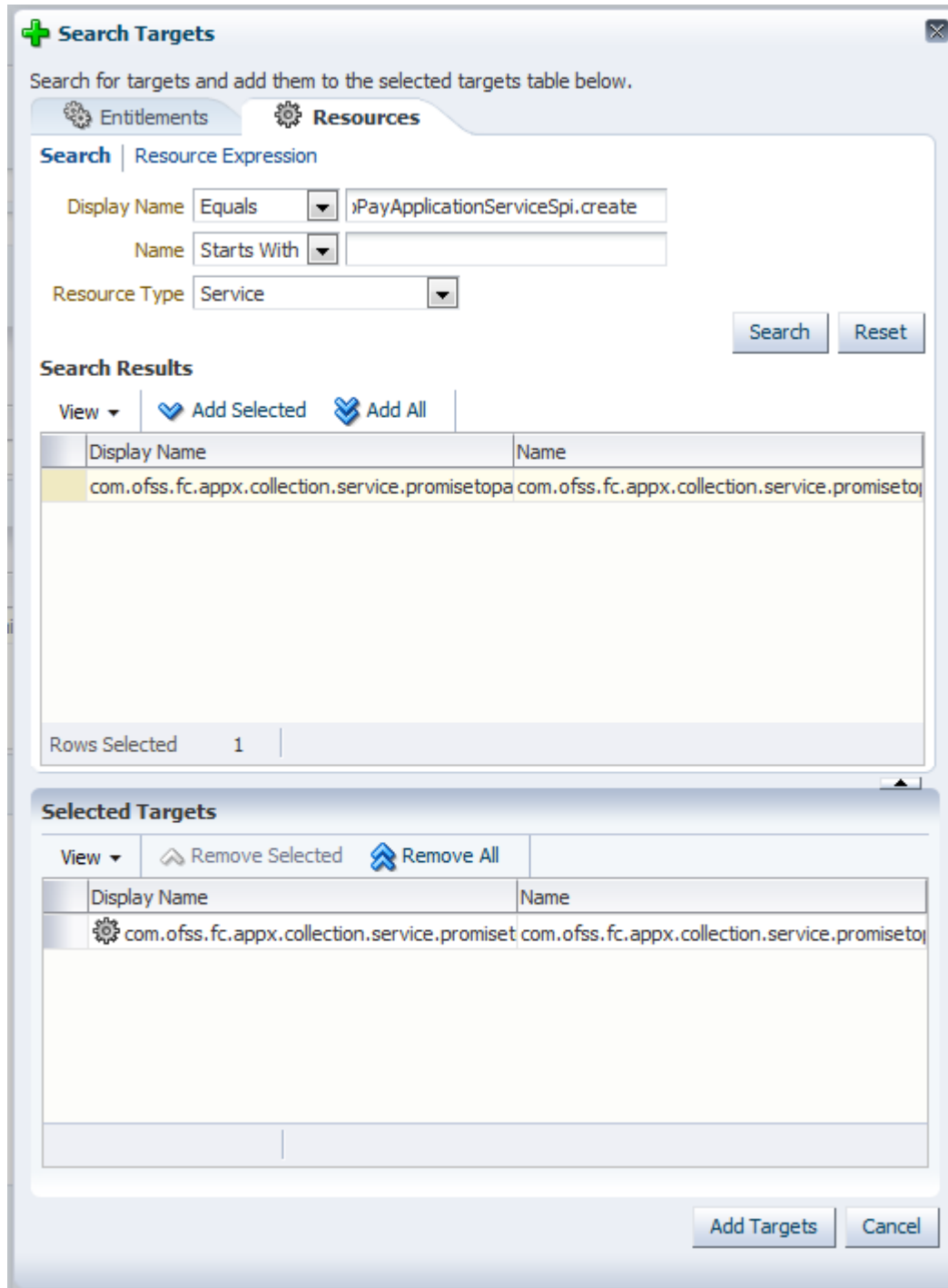


Figure 2–16 Search Targets



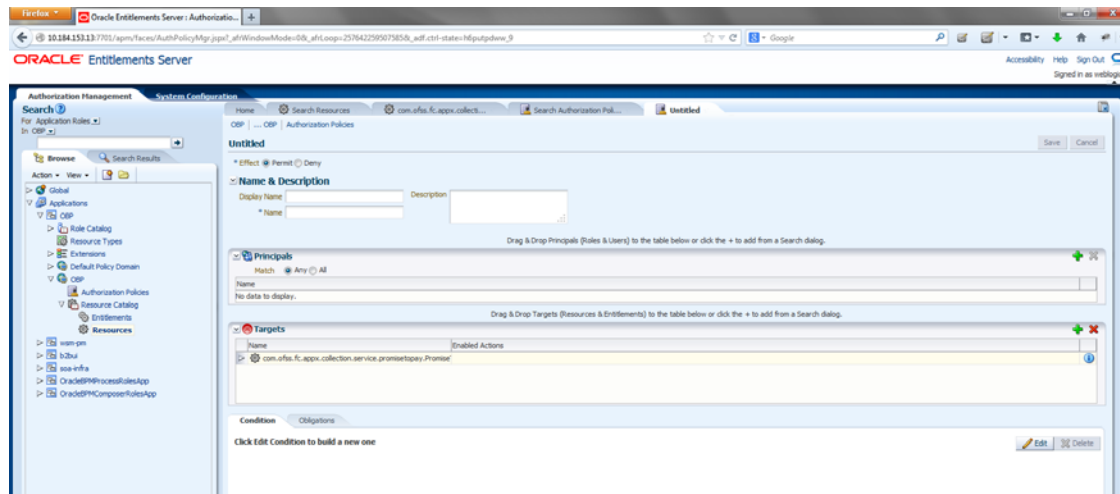
- e. In the **Search Targets** window, select the same service for which the policy is configured.
- f. Click **Add Targets**.

Figure 2-17 Add Targets



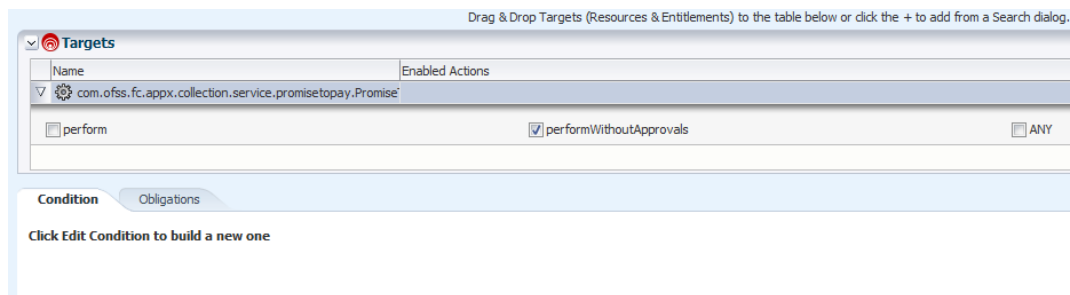
The searched target appears in the **Untitled** tab.

Figure 2–18 Target Appears



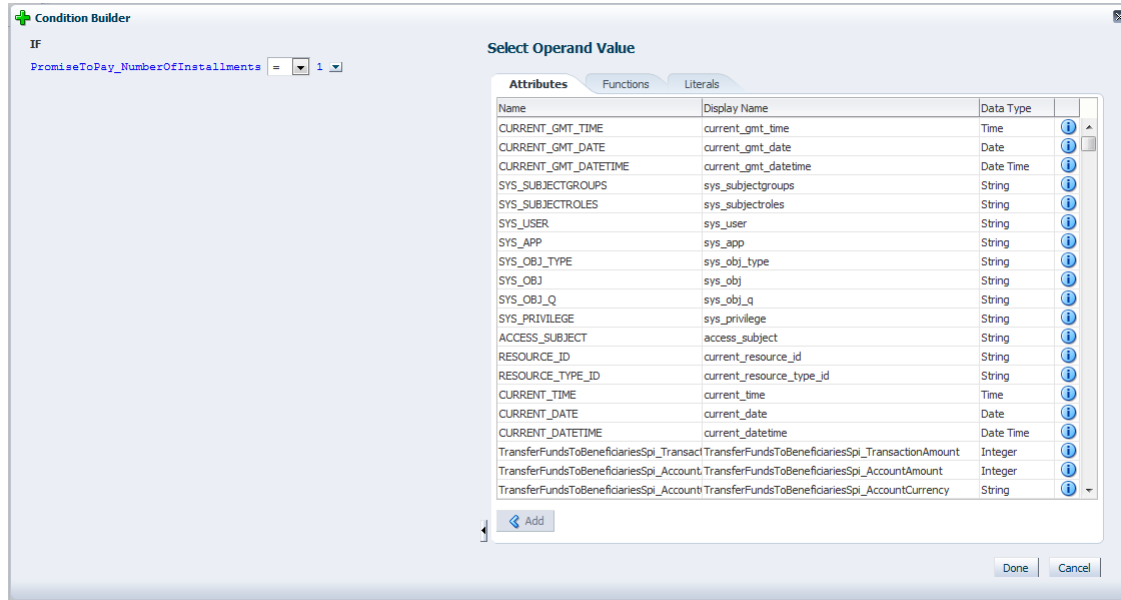
- g. In the **Targets** section, click the **Expand** arrow for the selected target and select **performWithoutApprovals**.

Figure 2–19 Targets - performwithoutApprovals



- h. Click **Edit Condition**.
- i. Select **PromiseToPay\_DaysPastDue** attribute.
- j. Click **Add**.
- k. Select the condition.
- l. Select the value for comparison.

**Figure 2–20 Condition Builder**



- m. Click **Done**.
- n. Click **Save**.

### 2.1.4 Giving Grant

The grants are configured as part of Day Zero Setup. Please verify whether the grants have been configured or not.

If the grants are not configured, you must provide grants to the application roles that are allowed to work on the PromiseToPayApplicationService. In addition, any new grants have to be configured manually through APM.

Two grants have to be provided. The first grant is for access (perform) and the second grant is for executing the OES rules (perform without approvals).

1. Follow the steps from [Section 2.1.2, "Editing Conditions on Attribute"](#) and [Section 2.1.3, "Adding Policies to Resources"](#) to step f - Click Add Targets.
2. In the **Untitled** tab, specify the following values:

**Table 2–7 Searching Policies - Giving Grant**

Field Name	Value
Effect	Permit
Display Name	AUTHENTICATEDROLE_OBP_APPX_COLLECTION_SERVICE_PROMISETOPAY_PROMISETOPAYAPPLICATIONSERVICESPI_CREATE_PERFORM_PL
Name	AUTHENTICATEDROLE_OBP_APPX_COLLECTION_SERVICE_PROMISETOPAY_PROMISETOPAYAPPLICATIONSERVICESPI_CREATE_PERFORM_PL
Description	AUTHENTICATEDROLE_OBP_APPX_COLLECTION_SERVICE_PROMISETOPAY_PROMISETOPAYAPPLICATIONSERVICESPI_CREATE_PERFORM_PL

3. Click **Expand** in targets for the selected target.
4. Select **Perform**.

5. Click **Save**.



---

---

## OBIEE Reports Setup

This chapter provides the process of setting up OBIEE reports. It involves installing Repository Creation Utility and Oracle Business Intelligence 11g.

### 3.1 Installing Repository Creation Utility (RCU)

This section explains the procedure for installing Repository Creation Utility (RCU).

#### Prerequisites

Following is the list of prerequisites installing RCU:

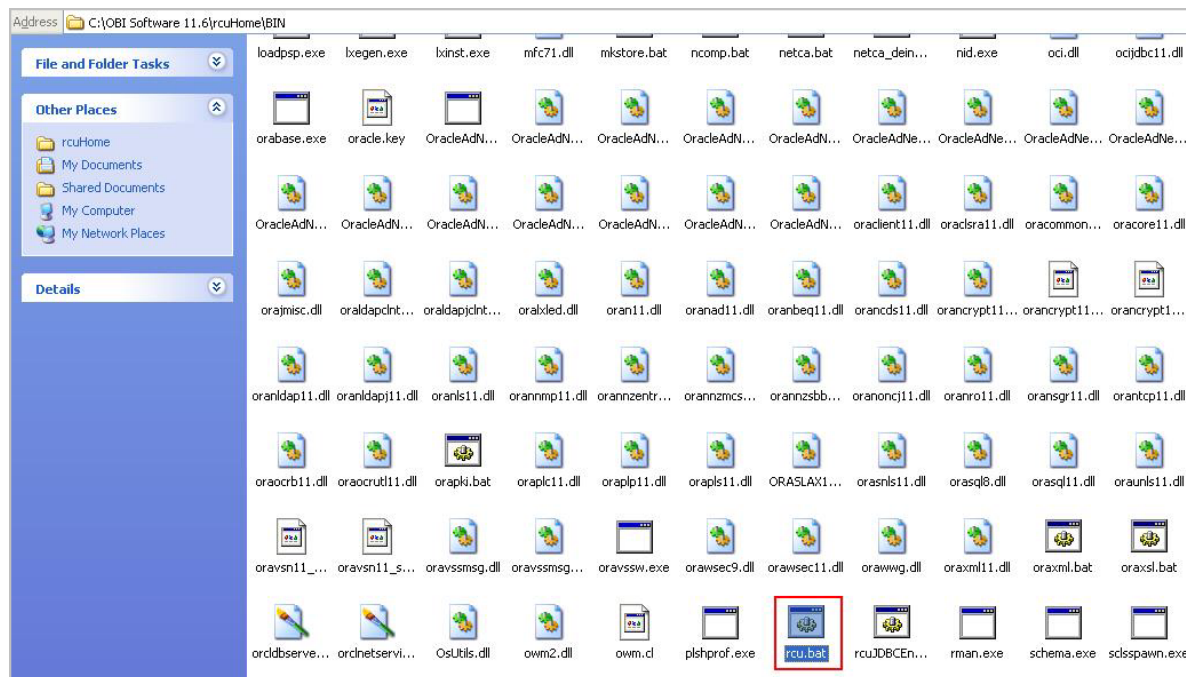
- Minimum of 4GB RAM is required. 3GB RAM may also work, but the system may become slow.
- Minimum of 10GB hard disk memory is required.
- Do not use any directory name with space while installing or working with Oracle DB and BI11g.

#### Installing RCU

Following are the steps to install RCU:

1. Download the RCU Installation files. Make sure all the zipped files are downloaded correctly and unzipped into a single folder.
2. From unzipped folder for RCU, run the **rcu.bat** file to start the utility. The rcu.bat file is located at rcuHome\BIN directory.

**Figure 3-1 Run rcu.bat file**



3. In the RCU Wizard Welcome page, click Next.

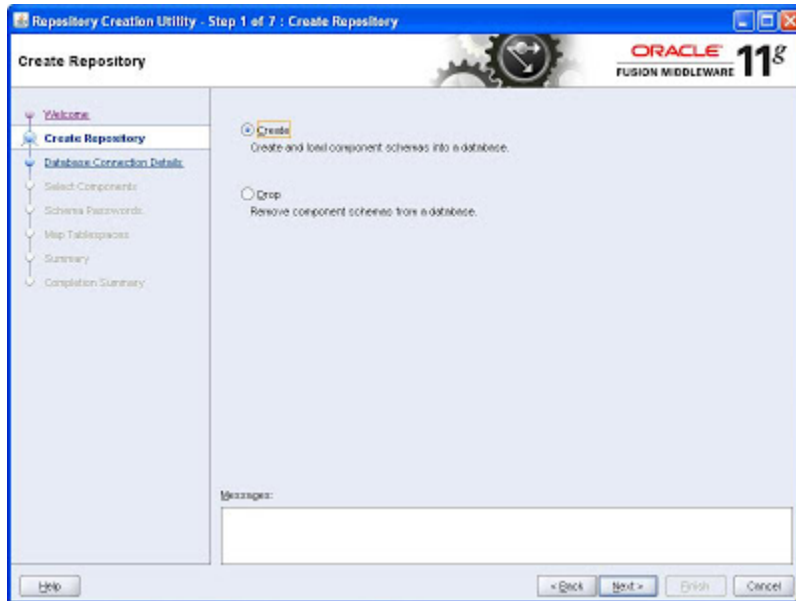
**Figure 3-2 RCU Installation Wizard - Welcome page**





4. In the Create Repository page, select the **Create** option and click **Next**.

**Figure 3–3 Create Repository**



5. In the Database Connection Details page, select the **Oracle Database** option from the **Database Type** list and enter the details.

For example:

Host Name: localhost

Port: 1521

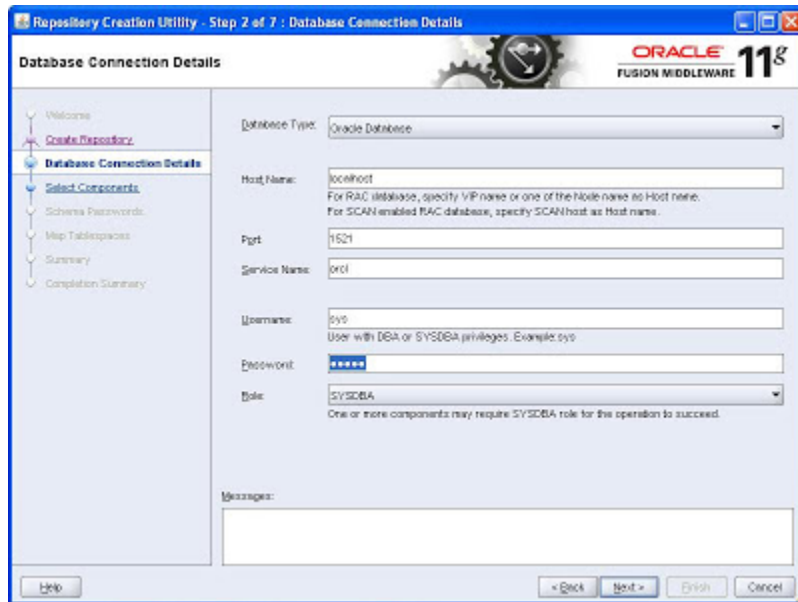
Service Name: ORCL

Username: sys

Role: sysdba

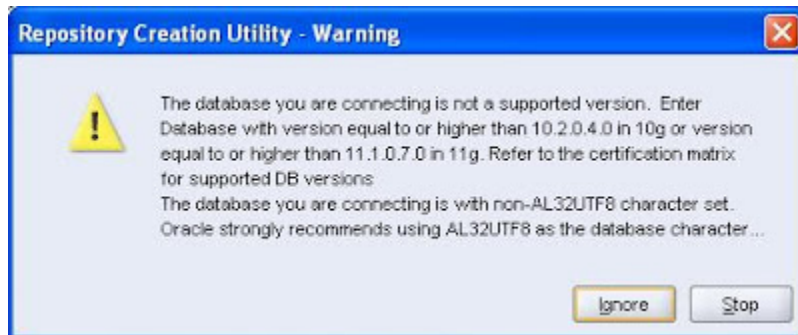
Password: MyPassword123

**Figure 3–4 Database Connection Details**



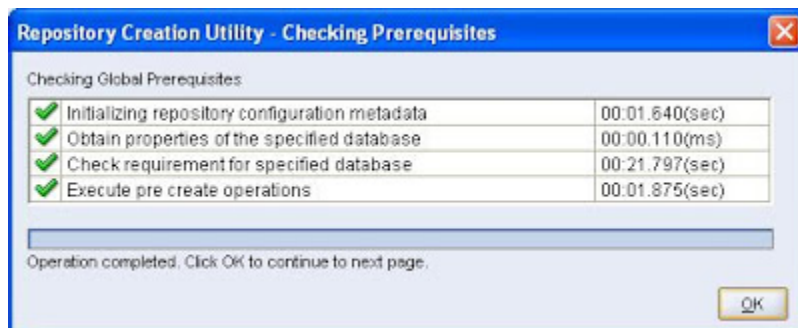
- If a warning message appears for using the Oracle database, click **Ignore** and continue with the installation.

**Figure 3–5 Warning message**



- Click **OK** after RCU validates and initializes database configuration.

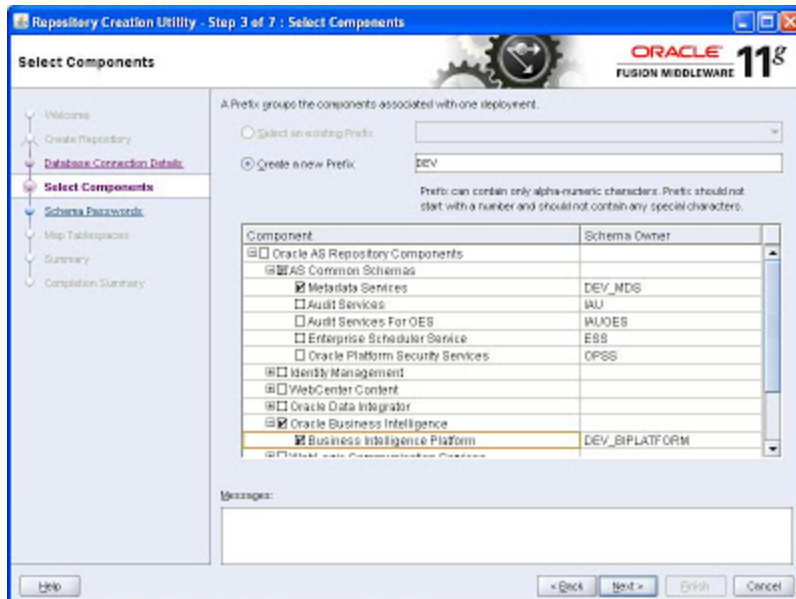
**Figure 3–6 Checking Global Prerequisites**



8. In the Select Components page, set the prefix to create the metadata schema in the **Create a new Prefix** field.

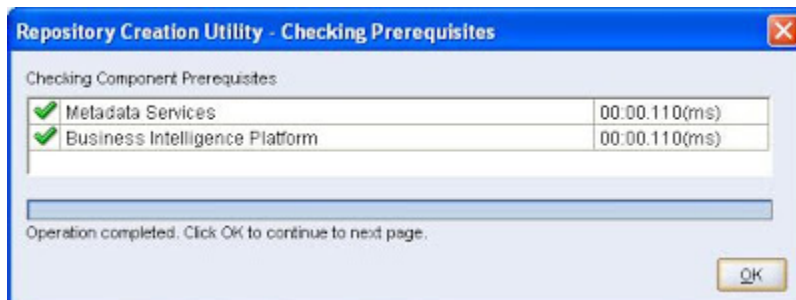
By default, the DEV value appears as the prefix. You can change it as per your requirement.

**Figure 3–7 Select Components**



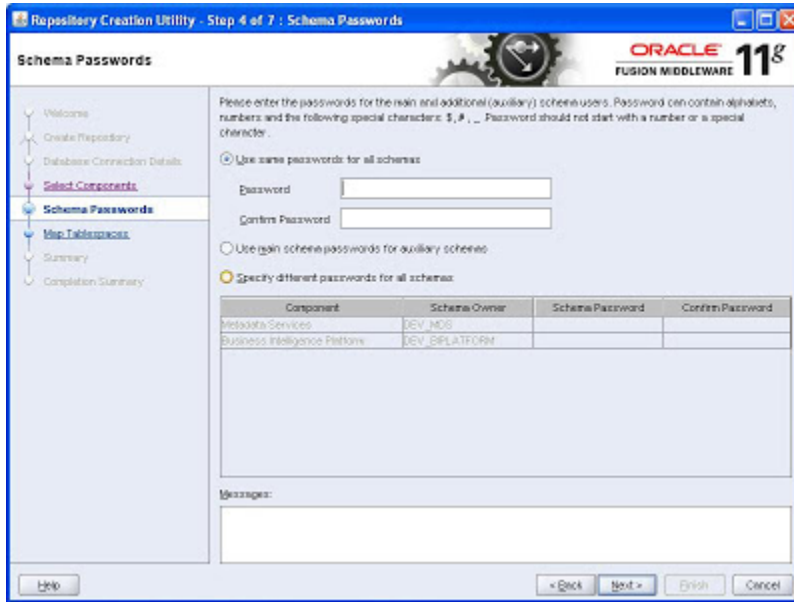
9. Select the appropriate schemas and click **Next**.
10. Click **OK** after the schema creation prerequisites check is completed.

**Figure 3–8 Checking Component Prerequisites**



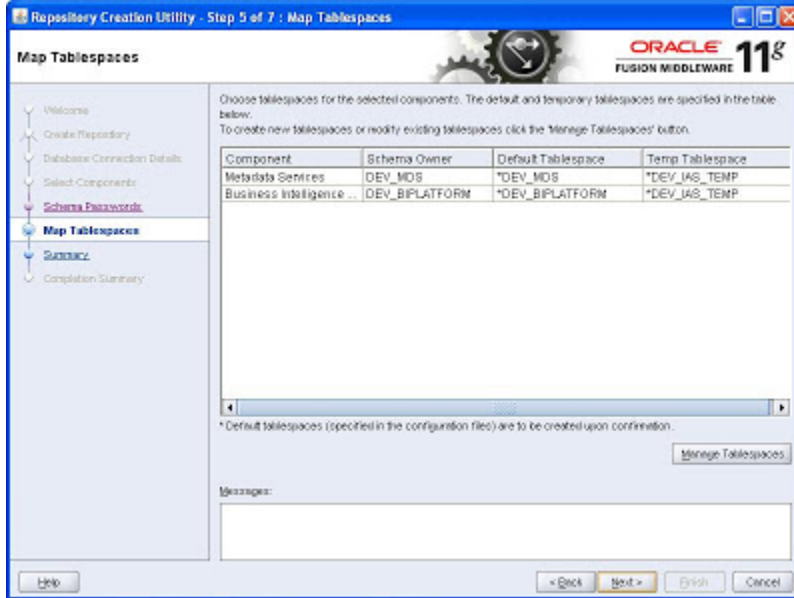
11. In the Schema Passwords page, enter the password for all schemas and click **Next**.

**Figure 3–9 Schema Passwords**



12. In the Map Tablespaces page, click **Next** to create tablespaces for the selected schemas.

**Figure 3–10 Map Tablespace**



13. Click **OK** to confirm tablespace creation.

Figure 3–11 Confirmation message



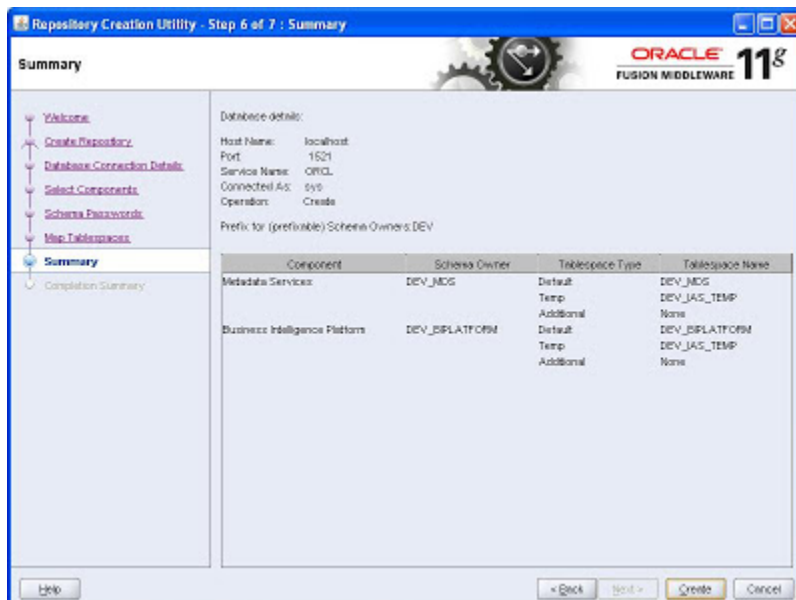
14. Click OK after the tablespace is validated and created.

Figure 3–12 Validating and Creating Tablespaces



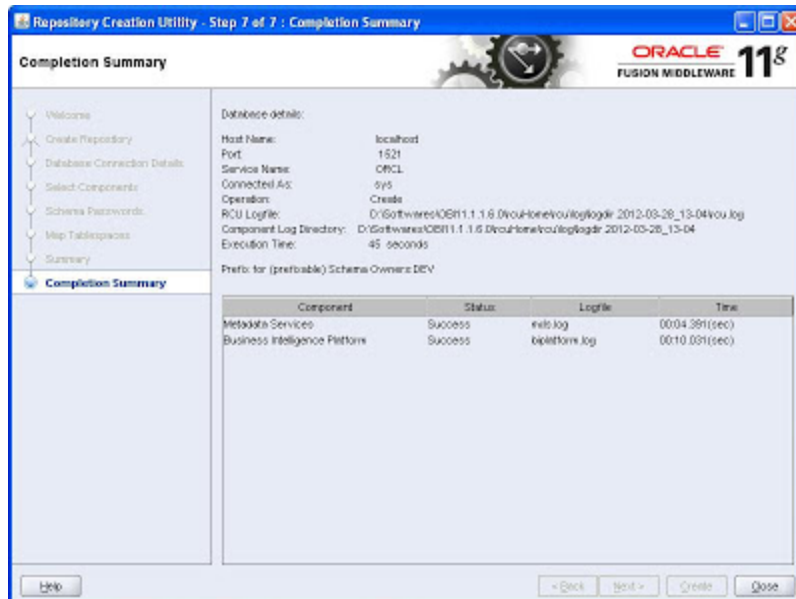
15. In the Summary page, click **Create**. RCU creates the required schema objects within the tablespaces.

Figure 3–13 Summary



16. In the Completion Summary page, click **Close**. The RCU installation process is complete.

**Figure 3–14 Completion**



## 3.2 Installing Oracle Business Intelligence 11g

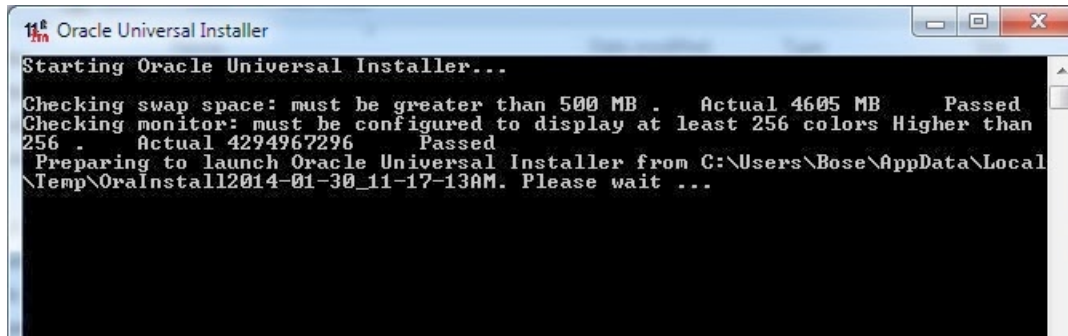
This section explains the procedure for installing Oracle Business Intelligence 11g 11.1.1.7.0. BI 11g is standardized with Oracle fusion middleware and hence leverage database for metadata storage just like any other middleware product. The following steps explain the installation of BI11g metadata schema on Oracle database. Same process can be leveraged to install metadata schema on other supported databases as well.

Following are the steps to install OBIEE 11g:

1. Download the OBIEE 11g version from the following location.  
<http://edelivery.oracle.com/>
2. Extract all the four disk into a single folder.
3. From Disk 1, click the **setup.exe** file.

Oracle Universal Installer checks for the initial set up and system requirement.

Figure 3–15 Oracle Universal Installer



4. After successful checks, the OBIEE Installation wizard opens. Click Next.

Figure 3–16 OBI Installation Wizard - Welcome page



5. In the Install Software Updates page, do either of the following and then click **Next**:
  - If you have Oracle Support username and password, enter the credentials.
  - If not, select the **Skip Software Updates** option.

Figure 3–17 Install Software Updates



6. In the Select Installation Type page, select the appropriate installation type. To install all components of BI, select the **Enterprise Install** option. Click **Next**.



Figure 3–18 Select Installation Type



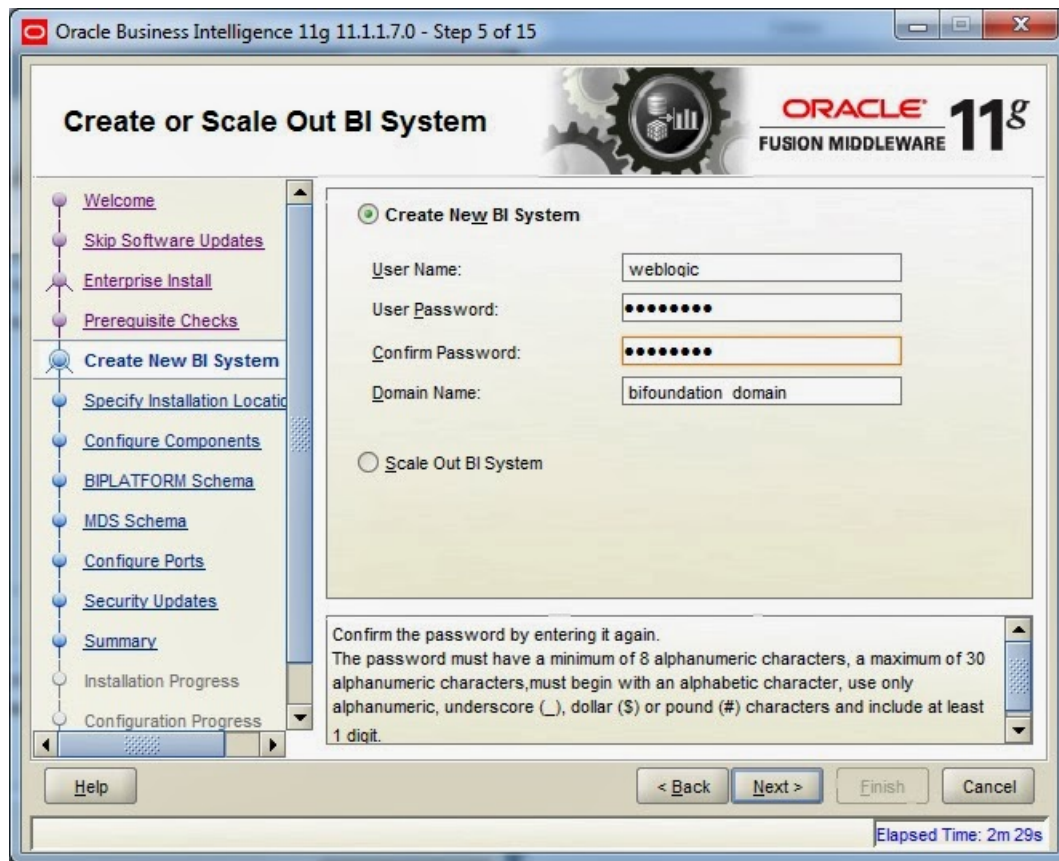
7. In the Prerequisite Checks page, click **Next** after the check for operating system certification and physical memory are completed.

Figure 3–19 Prerequisite Checks



8. In the Create or Scale Out BI System page, for a new installation, select the **Create New BI System** option.

Figure 3–20 Create or Scale Out BI System



9. Set the password for the weblogic user and click Next.

---

**Note:** Remember this password as it is later used to access BI system, EM, and Console.

---

10. In the Specify Installation Location page, in the Oracle Middleware Home Location field, browse and select the actual folder where the BI 11g must be installed. Once the home location is selected, the other fields are automatically filled. Click Next.

**Figure 3–21 Specify Installation Location**



11. If a warning message appears, click **Yes**.

**Figure 3–22 Warning message**



12. In the Configure Components page, view the components that are going to be installed. By default, all the components are selected. You can deselect the components, if not required. Click **Next**.

Figure 3–23 Configure Components



13. In the BIPLATFORM Schema page, select the database where the RCU is installed from the **Database Type** list and enter the following details.

For example:

Database Type: Oracle Database

Connect String: dbservername:portnumber:servicename

BIPLATFORM Name: DEV\_BIPLATFORM

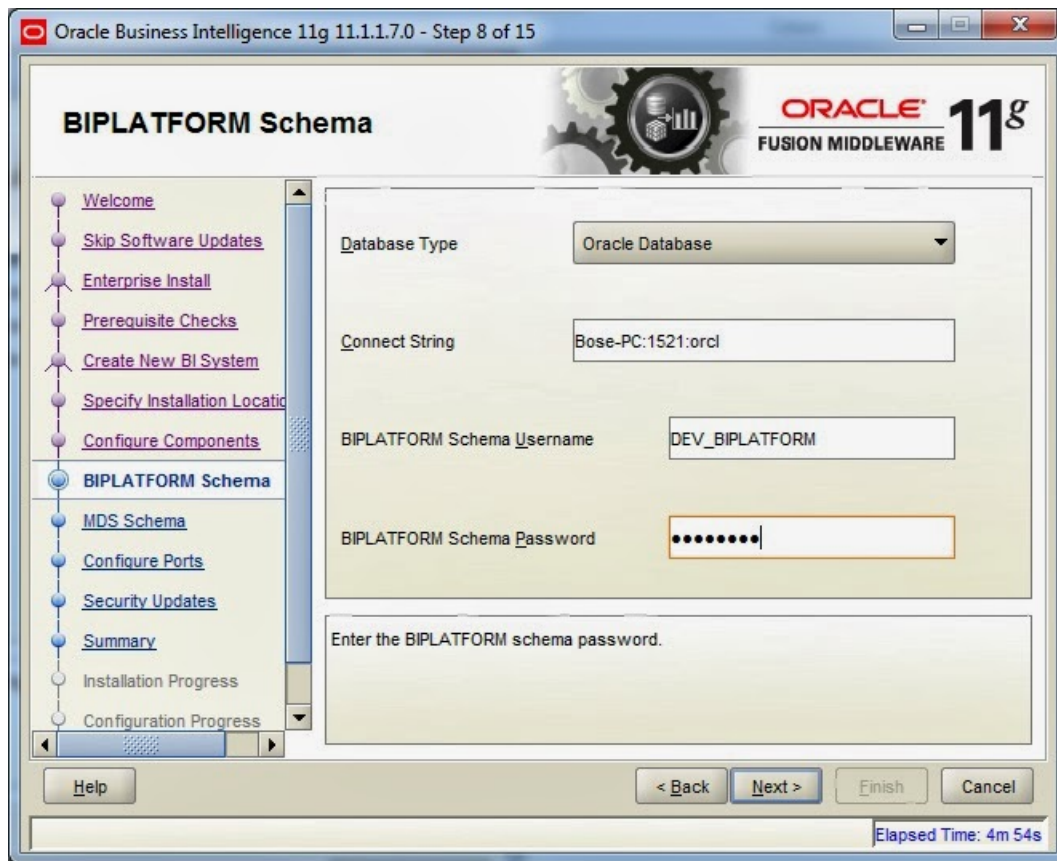
BIPLATFORM Password: Admin123

---

**Note:** The username and password are the same that were set during installation of RCU.

---

Figure 3-24 BIPLATFORM Schema



14. In the MDS Schema, select the database and enter the details as done in previous step. Here, the username will be DEV\_MDS. Click Next.

Figure 3–25 MDS Schema

Oracle Business Intelligence 11g 11.1.1.7.0 - Step 9 of 15

### MDS Schema

Database Type: Oracle Database

Connect String: Bose-PC:1521:orc

MDS Schema Username: DEV\_MDS

MDS Schema Password: .....

Enter the connect string in the format `hostname:port:service_name` for the Oracle database where you installed the Oracle Business Intelligence Enterprise Edition metadata schema using the Repository Creation Utility (RCU). For Application Cluster (RAC) Database use the format `host1:port1:instance1^host2:port2:instance2@service_name`.

Help < Back Next > Finish Cancel

Elapsed Time: 5m 9s

15. In the Configure Ports page, select the **Auto Port Configuration** option to install using default port numbers, as usually done for Oracle installations. Click **Next**.

Figure 3–26 Configure Ports



16. In the Specify Security Updates page, do either of the following:
  - If you have Oracle Support email address, provide it to receive information about security issues and click **Next**.

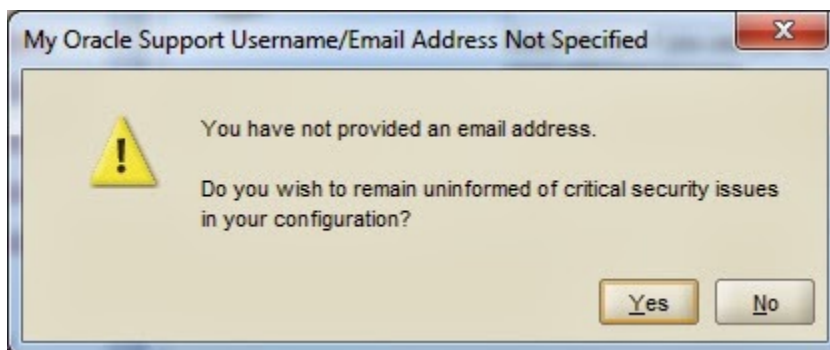


Figure 3–27 Specify Security Updates



- If you do not wish to receive updates, deselect the check box, click **Next**, and click **Yes** in the warning message.

Figure 3–28 Warning message



- In the Summary page, view the configuration and click **Next**.
- In the Installation Progress page, view the progress bar till it shows 100% complete. Post installation script may take some time.

Figure 3–29 Installation Progress



19. After successful installation, in the Configuration Progress page, view the progress of the configuration till it shows 100%. Click Next.

Figure 3-30 Installation Successful



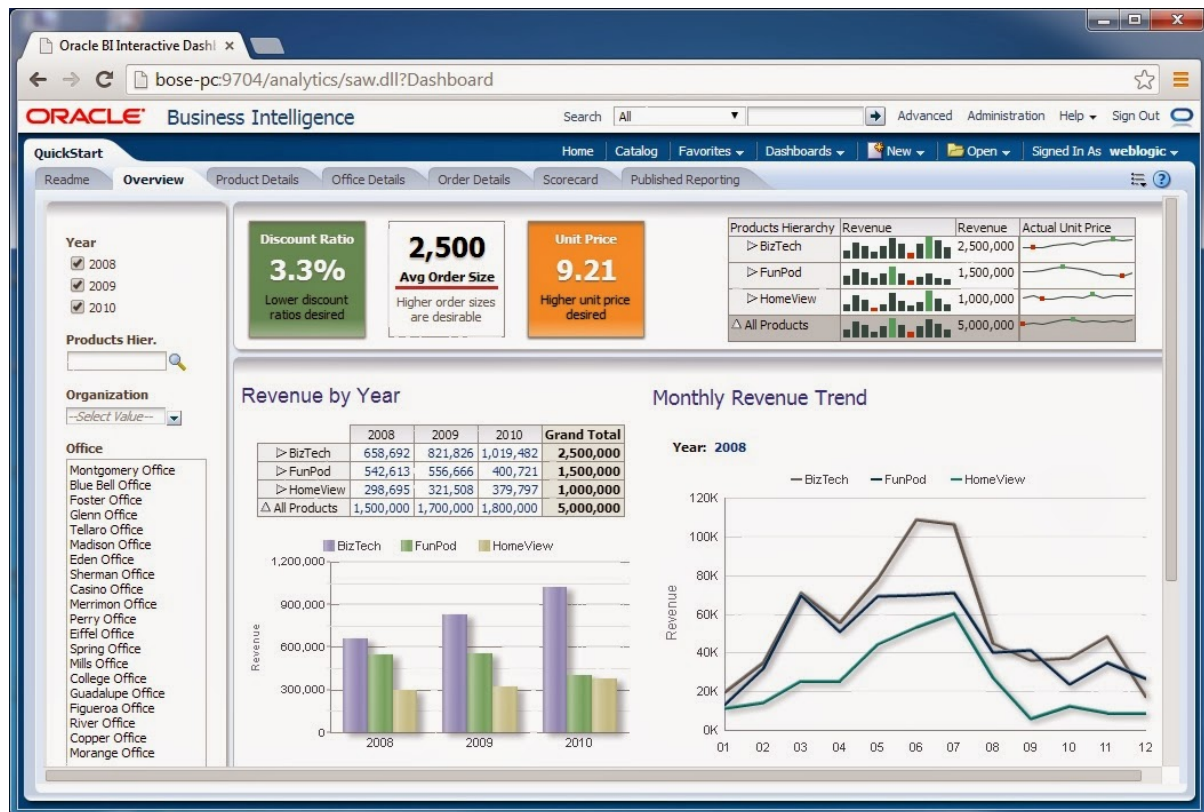
20. In the Complete page, click **Save** to save the path details for middleware home, domain home, and others in a file for reference.

Figure 3–31 Complete BI Installation



21. Click **Finish** to complete the installation and configuration.
22. Browse through EM and console to play with BI.

Figure 3–32 OBI Interface



### 23. Save configuration.

**Configure Components:** Configure the following components:

- WebLogic Console: [http:// IP-ADDRESS.in.oracle.com:7001/console](http://IP-ADDRESS.in.oracle.com:7001/console)
- Oracle Enterprise Manager: <http:// IP-ADDRESS.in.oracle.com:7001/em>
- Business Intelligence Enterprise Edition: <http:// IP-ADDRESS.in.oracle.com:9704/analytics>
- Business Intelligence Publisher: <http:// IP-ADDRESS.in.oracle.com:9704/xmlpsrver>
- Real-Time Decisions: <http:// IP-ADDRESS.in.oracle.com:9704/ui>
- Calculation Manager: <http:// IP-ADDRESS.in.oracle.com:9704/workspace>
- Financial Reports: <http:// IP-ADDRESS.in.oracle.com:9704/workspace>
- Workspace: <http:// IP-ADDRESS.in.oracle.com:9704/workspace>
- Essbase Suite
- APS: <http:// IP-ADDRESS.in.oracle.com:9704/aps>
- Essbase Server
- Essbase Studio: [IP-ADDRESS.in.oracle.com](http:// IP-ADDRESS.in.oracle.com)
- Essbase Administration Services: [IP-ADDRESS.in.oracle.com:9704](http:// IP-ADDRESS.in.oracle.com:9704)

## 3.3 Copying RPD and Reports

This section explains the steps to copy RPD and reports.

### 3.3.1 Reports Setup

This section explains the steps for Reports setup.

#### Step 1

Create a temporary directory (for example, TEMPDIR) on the OBI Server using the following command:

```
mkdir TEMPDIR
```

#### Step 2

Copy the OBP Collections 2.4 reports installation package, `collection_reports.zip`, which you have downloaded from the edelivery to TEMPDIR by using WINSXP.

#### Step 3

Uncompress the `Collection_V24[Build_Number].zip` file using the following command:

```
cd <PATH>/TEMPDIR  
unzip collection_reports.zip
```

Where, <PATH> is the path where the TEMPDIR folder is located.

#### Step 4

Copy `collectionreports` folder and `collectionreports.atr` to the shared location by following commands:

```
cp -r collectionreports ${middleware_home}/instances/${instance_  
name}/bifoundation/OracleBIPresentationServicesComponent/coreapplication_  
obips1/catalog/SampleAppLite/root/shared/
```

```
cp -r collectionreports.atr ${middleware_home}/instances/${instance_  
name}/bifoundation/OracleBIPresentationServicesComponent/coreapplication_  
obips1/catalog/SampleAppLite/root/shared/
```

### 3.3.2 Day 0 Setup

This section explains the steps for Day 0 Setup.

#### Step 1

Take a backup of existing `localedefinitions.xml` by following command:

```
mv ${middleware_home}/ Oracle_  
BI1/bifoundation/web/display/localedefinitions.xml ${middleware_home}/  
Oracle_BI1/bifoundation/web/display/localedefinitions.xml_bk
```

#### Step 2

Take a backup of existing `instanceconfig.xml` by following command:

```
mv ${middleware_home}/ instances/${instance_name}/
config/OracleBIPresentationServicesComponent/coreapplication_
obips1/instanceconfig.xml ${middleware_home}/ instances/${instance_name}/
config/OracleBIPresentationServicesComponent/coreapplication_
obips1/instanceconfig.xml_bk
```

### Step 3

Copy localedefinitions.xml and instanceconfig.xml to server by following commands:

```
cp Day0/ localedefinitions.xml ${middleware_home}/ Oracle_
BI1/bifoundation/web/display/
```

```
cp Day0/ instanceconfig.xml ${middleware_home}/ instances/${instance_
name}/ config/OracleBIPresentationServicesComponent/coreapplication_
obips1/
```

## 3.3.3 RPD Deployment

This section explains the steps for RPD Deployment.

### Step 1

Unzip collection\_reports.zip folder from local Windows machine.

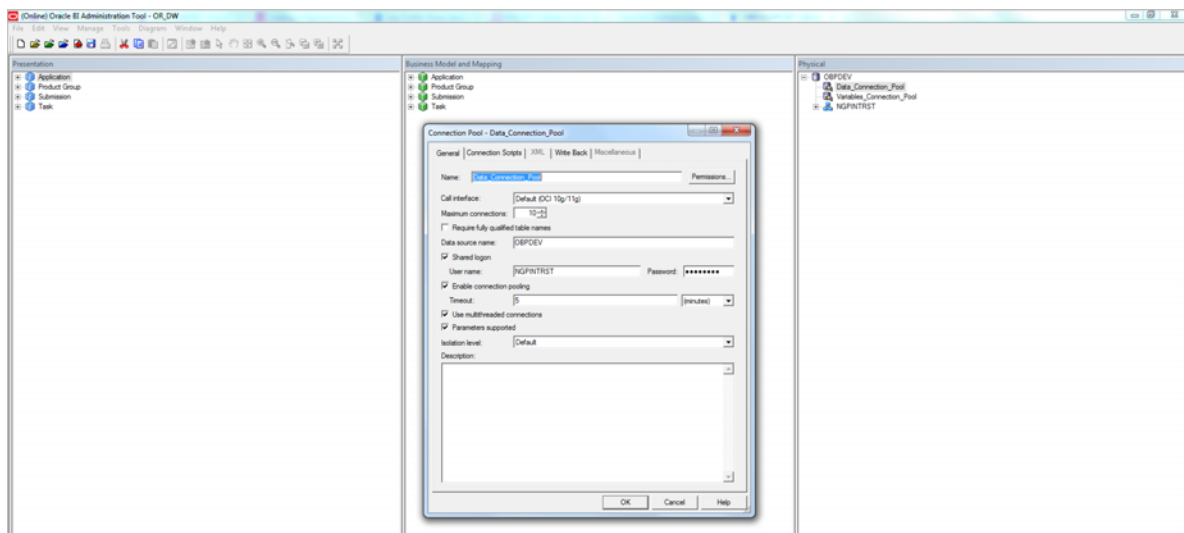
### Step 2

Open RPD "CollectionMutipleFacts.rpd" present inside folder RPD using Oracle BI Admin Tool.

### Step 3

Update the DB source name and the user credentials in the Connection Pool of the repository and set it to the Analytics DB.

**Figure 3–33 Update source name and user credentials**



**Step 4**

Add the analytics DB TNS entry.

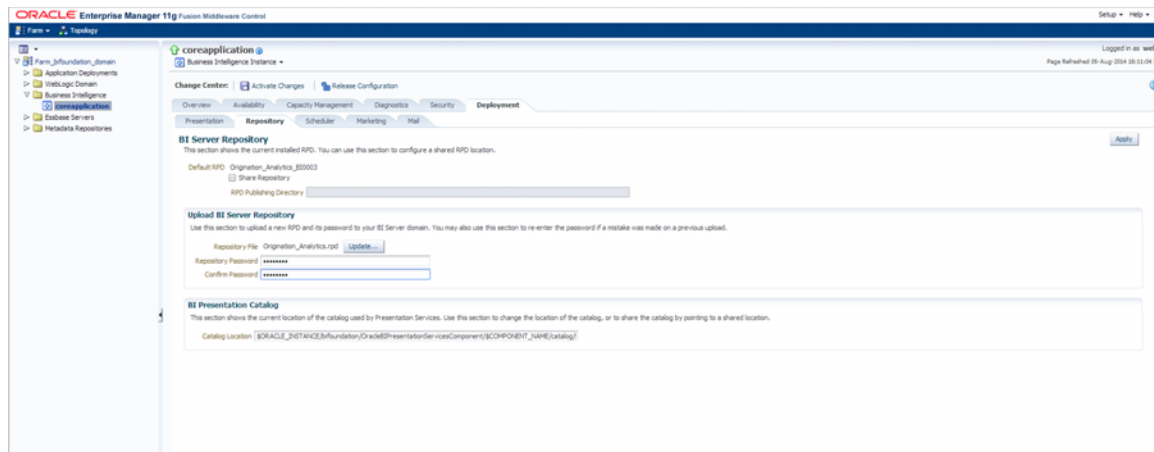
Add the TNS entry for the analytics DB in the tnsnames.ora file at location ORACLE\_HOME/network/admin

**Step 5**

Upload the repository to the OBI server as follows:

1. Log in to the OBI server EM console.
2. Navigate to Business Intelligence -> coreapplication -> Deployment ->Repository tab.
3. Click **Release Configuration**.
4. Click **Upload** and select the repository to be uploaded.
5. Enter the repository password.
6. Click **Apply**.
7. Restart the OBI server components.

**Figure 3–34 Upload repository to OBI server**

**Step 6**

Open Oracle Enterprise Manager, Business Intelligence Enterprise Edition only on Mozilla browser.